

Iowa FFA Nursery/Landscape CDE

1. Organic matter will
 - a. aerate the soil.
 - b. reduce the availability of water.
 - c. restrict available nutrients.
 - d. none of the above.

MULTIPLE CHOICE

2. What is the first stage of growth called after a cutting starts to grow?
 - a. softwood formation
 - b. stem formation
 - c. scab formation
 - d. callus formation
3. At what percentage should the humidity be kept for new cuttings?
 - a. 100 percent
 - b. 50 percent
 - c. 25 percent
 - d. 10 percent
4. _____ formation occurs during the storage period of cuttings.
 - a. Tip
 - b. Callus
 - c. Leaf
 - d. Stem
5. When grafting, what is the name of the newly installed shoot or top of the plant?
 - a. tissue
 - b. rootstock
 - c. corm
 - d. scion
6. In order to have a successful graft, the two plants generally must be—
 - a. friends
 - b. related
 - c. neighbors
 - d. the same size

7. Side veneer grafting in evergreens is used to produce the right—
 - a. color
 - b. size
 - c. wood type
 - d. stems

8. In general, a plant grown in a one-gallon container requires how much water each day?
 - a. one gallon
 - b. one quart
 - c. one pint
 - d. two gallons

9. Which of the following are important things to be considered when selecting a container?
 - a. appearance
 - b. shape
 - c. insulation value
 - d. all the above

10. Which of the following would increase the water requirements of a container-grown plant?
 - a. a hot day
 - b. a plant in bloom
 - c. a broadleaf evergreen
 - d. all of the above

11. Planting media can be sterilized by heating to 180 degrees F for how many minutes?
 - a. 10 minutes
 - b. 50 minutes
 - c. 120 minutes
 - d. 30 minutes

12. Sterile planting media, sanitary growing site, and sanitary containers are the best way to control which of the following?
 - a. insects
 - b. growth of the plants
 - c. disease
 - d. temperature

13. A major factor in selecting annual plants for a specific site is—
 - a. height
 - b. color
 - c. purpose

14. Perennials are transplanted in the—
- winter and summer
 - fall and spring
 - winter, spring, summer and fall
 - summer
15. The leaves of narrowleaf evergreens may be either—
- simple or compound
 - needlelike or scalelike
 - alternate or opposite
 - all of the above
16. Which of the following is not a broadleaf evergreen?
- holly
 - magnolia
 - yew
 - boxwood
17. Bare root trees are planted only when they are—
- brown
 - awake
 - dormant
 - wet
18. The best time to plant bare root deciduous shrubs is when they are—
- green
 - brown
 - awake
 - dormant
19. If the proper ground cover plants are selected, _____ should not be necessary after the first year.
- sunning
 - watering
 - fertilizing
 - pruning
20. Bulbs are more attractive when planted in a—
- pile
 - zigzag
 - line
 - mass

21. At what angle should stems be cut for pruning?

PAGE 4

- a. 45 degree angle
- b. 90 degree angle
- c. 20 degree angle
- d. 180 degree angle

22. With xeriscaping, plants are grouped together in relation to their _____ needs.

- a. fertilizer
- b. soil
- c. sun
- d. water

23. For lawns, how many inches of topsoil should be spread over the rough grade subsoil?

- a. ten
- b. four
- c. six
- d. two

24. What is a good pH level for most grasses?

- a. 7.0 to 7.5
- b. 5.0 to 7.0
- c. 4.5 to 5.0
- d. 6.0 to 6.5

25. Identify the machine that pulls plugs out of the soil and leaves holes in the lawns for air and water to enter?

- a. rigger
- b. mower
- c. plugger
- d. sodder

SCORING & PRINTING OPTIONS: RESCORE MULTIPLE ANSWER SCORING
 CORRECT ANSWER MARK X TOTAL ONLY
 MARK ONLY ONE

NCS Test Sheet
25/25

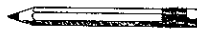
Form No. 95141

Reorder Phone Number
 1-800-367-6627

- ↑ FEED IN THIS DIRECTION
- T F
- 1 ● B C D E A
 - 2 A B C ● E D
 - 3 ● B C D E A
 - 4 A ● C D E B
 - 5 A B C ● E D
 - 6 A ● C D E B
 - 7 ● B C D E A
 - 8 A B ● D E C
 - 9 A B C ● E D
 - 10 A B C ● E D
 - 11 A B C ● E D
 - 12 A B ● D E C
 - 13 A B C ● E D
 - 14 A ● C D E B
 - 15 A ● C D E B
 - 16 A B ● D E C
 - 17 A B ● D E C
 - 18 A B C ● E D
 - 19 A ● C D E B
 - 20 A B C ● E D
 - 21 A ● C D E B
 - 22 A B C ● E D
 - 23 A B ● D E C
 - 24 A B C ● E D
 - 25 A B ● D E C
- ↑ FEED IN THIS DIRECTION

KEY	ITEM	COUNT
	25	
0	0	
1	1	
2	2	
3	3	
4	4	
5	5	
6	6	
7	7	
8	8	
9	9	

MARKING INSTRUCTIONS



Use a No. 2 Pencil

A ● C D E
 Fill oval completely

A B C D E
 Erase cleanly

STUDENT ID NUMBER									
0	0	0	0	0	0	0	0	0	0
1	1	1	1	1	1	1	1	1	1
2	2	2	2	2	2	2	2	2	2
3	3	3	3	3	3	3	3	3	3
4	4	4	4	4	4	4	4	4	4
5	5	5	5	5	5	5	5	5	5
6	6	6	6	6	6	6	6	6	6
7	7	7	7	7	7	7	7	7	7
8	8	8	8	8	8	8	8	8	8
9	9	9	9	9	9	9	9	9	9



NUMBER CORRECT	UN
PERCENT CORRECT	100
ROSTER NUMBER	MARK
LETTER GRADE	
SCORE	
RESCORE	



With Education in Mind™

All rights reserved.
 Printed in U.S.A.

Copyright © 1994
 National Computer Systems, Inc.

Printed on recyclable paper

NAME KEY

SUBJECT LANDSCAPE TEST

PERIOD _____ DATE _____

1998 Nursery/Landscape Practicum Problem Solving.
Nursery/ Landscape Contest

1. You pay laborers, who plant small trees, \$.08 per plant up to 800 plants per day. For all plants in excess of 800 plants, you pay \$.09 per plant. Scott planted 917 trees. How much did she earn?
 - a. \$82.53
 - b. \$74.53
 - c. \$73.36
 - d. \$72.00

2. You planted 400 trees that cost \$880 to buy and plant. You spent \$350 per year for 4 years to maintain and care for the trees. During the 4 year period 37 of the trees died. How much do you have invested in each tree at the end of the 4 years.
 - a. \$6.28
 - b. \$5.70
 - c. \$3.39
 - d. 3.08

3. You wish to apply 15 lbs of P₂O₅ per acre of land using 0-46-0 fertilizers. How many pounds of fertilizer will you need per acre?
 - a. 69
 - b. 46
 - c. 33
 - d. 15

4. The rooting percentage for your forsythia cuttings is 87%. How many cuttings must you take to have 8000 rooted cutting?
 1. 8000
 2. 9600
 3. 9195
 4. 9040

5. The herbicide you wish to use on a bed of seedling nursery stock should be applied at a rate of 3 pounds per acre. The bed of seedling stock measures 312 feet by 15 feet. How many ounces (16 ounces equals one pound) of herbicide should be applied to the bed of seedling nursery stock? (one acre equals 43,560 sq. feet.)
 - a. 3 ounces
 - b. 5 ounces
 - c. 9 ounces
 - d. 48 ounces

Nursery/Landscape Landscaping Practicum -- 1998

Please use the attached landscape plan to help you answer the following questions.

1. One of the Silver Maples out front were damaged in a storm. The homeowner wants it replaced with a tree of similar size. Which one of the following is the best solution?
 - a. Crab -- 20'
 - b. Serviceberry -- 15-20'
 - c. Redwood -- 60-80'
 - d. Red Oak -- 30-50'

2. How long are the landing steps on the front walk?
 - a. 5 ft.
 - b. 10 ft.
 - c. 2 ft.
 - d. 7 ft.

3. The deck is _____ square feet.
 - a. 361 sq. ft.
 - b. 294.5 sq. ft.
 - c. 300 sq. ft.
 - d. none of the above

4. How many hostas are planted in the entire foundation planting?
 - a. 3
 - b. 7
 - c. 19
 - d. 9

5. There are several existing plants around the house. These are:
 - a. Perennials
 - b. Hostas
 - c. Burning Bushes
 - d. Yews

6. Similar plants are designated by similar symbols based on the industry standard; how many burning bush plants are in this landscape?

- a. 2
- b. 5
- c. 7
- d. 1

7. What is the square footage of the house including the garage?

- a. 1722
- b. 1107
- c. 1459
- d. 924

8. The title block includes the following (this design layout):

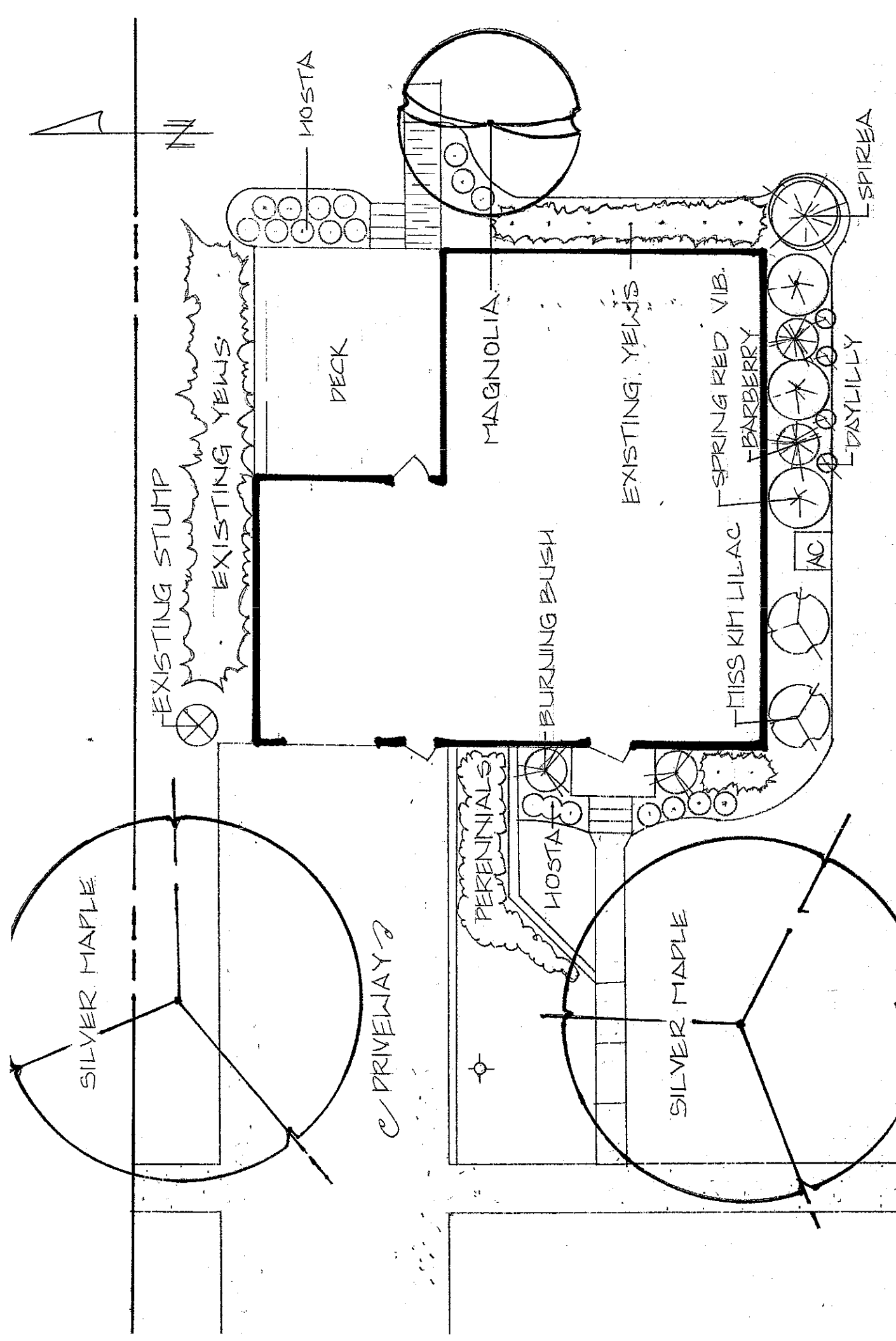
- a. Plant list
- b. North arrow
- c. Dimensions
- d. Client, designer, scale, date, etc.

9. The phone number is included in this design. Why would this be important?

- a. So their friends can call them.
- b. For efficiency.
- c. For the client's information.
- d. None of the above.

10. Approximately how many linear feet of edging will be installed?

- a. 250
- b. 125
- c. 40
- d. 80



DATE: JUNE 17, 1998
 SCALE: 1" = 10'
 DRAWN BY: JON LARSON

LARSON RESIDENCE
 406 EAST STREET PHONE: (XXX)-XXX-XXXX